

Scout Campout at Talladega Superspeedway

Times (all are CT time):

- Camping opens on Monday, September 26th at 12:00 PM and stays open until Monday, October 3rd at 12:00 PM
 - o There is no checking in needed, head straight to the campground. I recommend that whoever arrives first from the group, set up their perimeter for the whole group. Please be respectful of space as we have 500 people joining us for scout weekend
 - For extra vehicles, please park on the fence line in the back of the campground, or the overflow parking lot, located behind the backstretch (photo below)



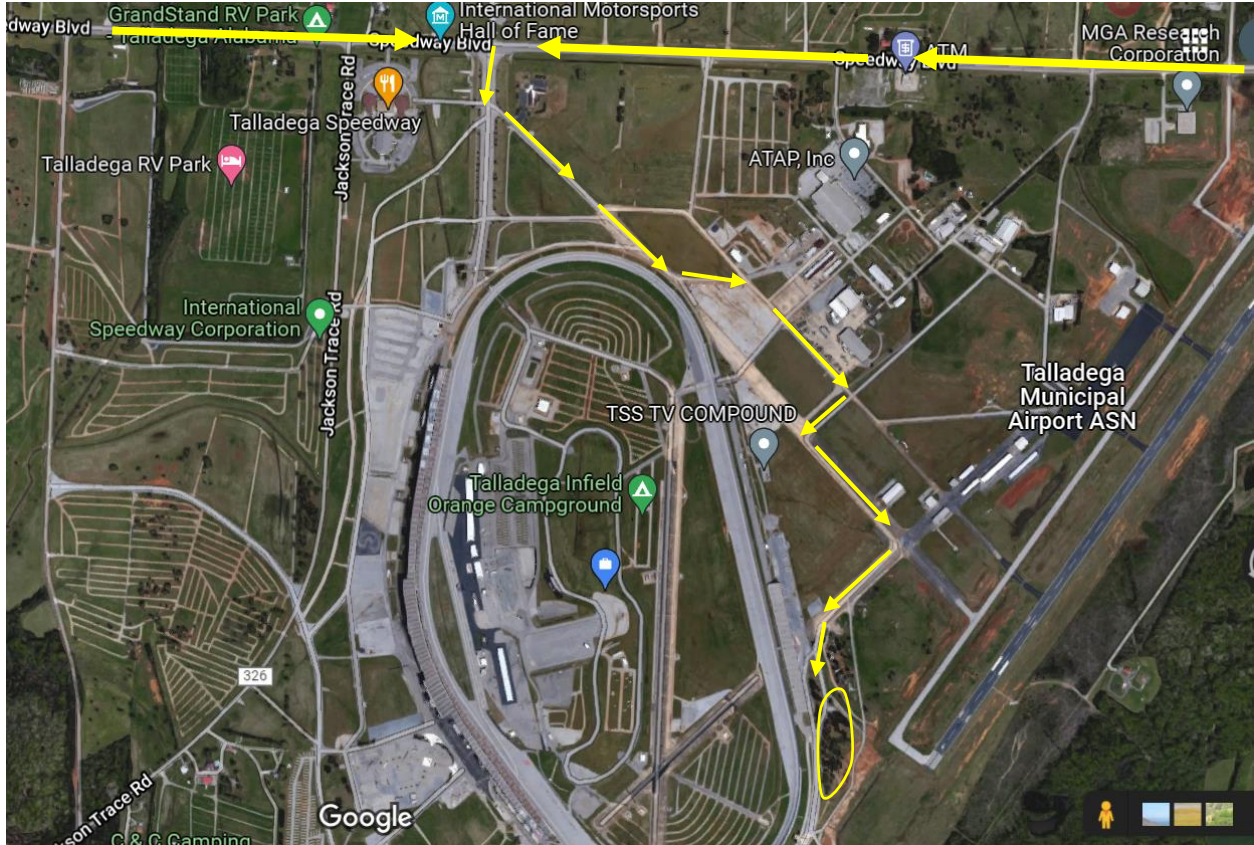
- o NASCAR rep will be stationed in the campground on Friday evening from 4:30 PM to 6:30 PM to pass out the scout patches and answer any questions
- Cup race: Sunday, October 2nd at 1:00 PM
- Xfinity race: Saturday, October 1st at 3:00 PM
- Truck race: Saturday, October 1st at 11:30 AM

Below are directions on how to get to the campground once you arrive on Speedway Blvd. There will be signs when you arrive, as well. Talladega's address is: 3366 Speedway Blvd, Talladega, AL 35160

Main Entrance



Scout Campout at Talladega Superspeedway



Scout Campground Entrance



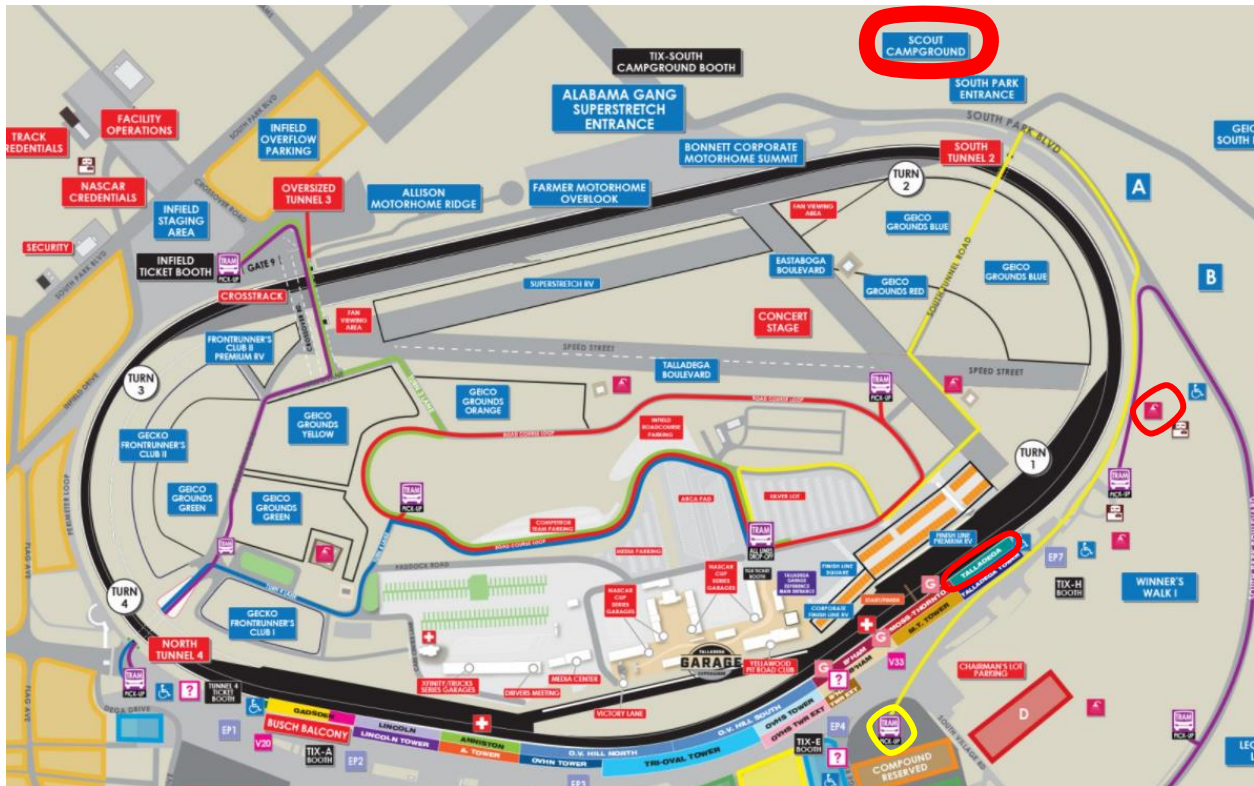
Scout Campout at Talladega Superspeedway

Below is a map of key points: scout campground, seating location, the restroom/shower facility, and the yellow tram location is all circled. If you have the Talladega Garage Experience pass, you **MUST** take the yellow tram to get down to the TGE. You must have your ticket and your TGE pass to go into the TGE for the corresponding day that you have it

Note: The restroom/shower facility is just inside of the south park entrance. You may walk or drive to this location, parking is limited

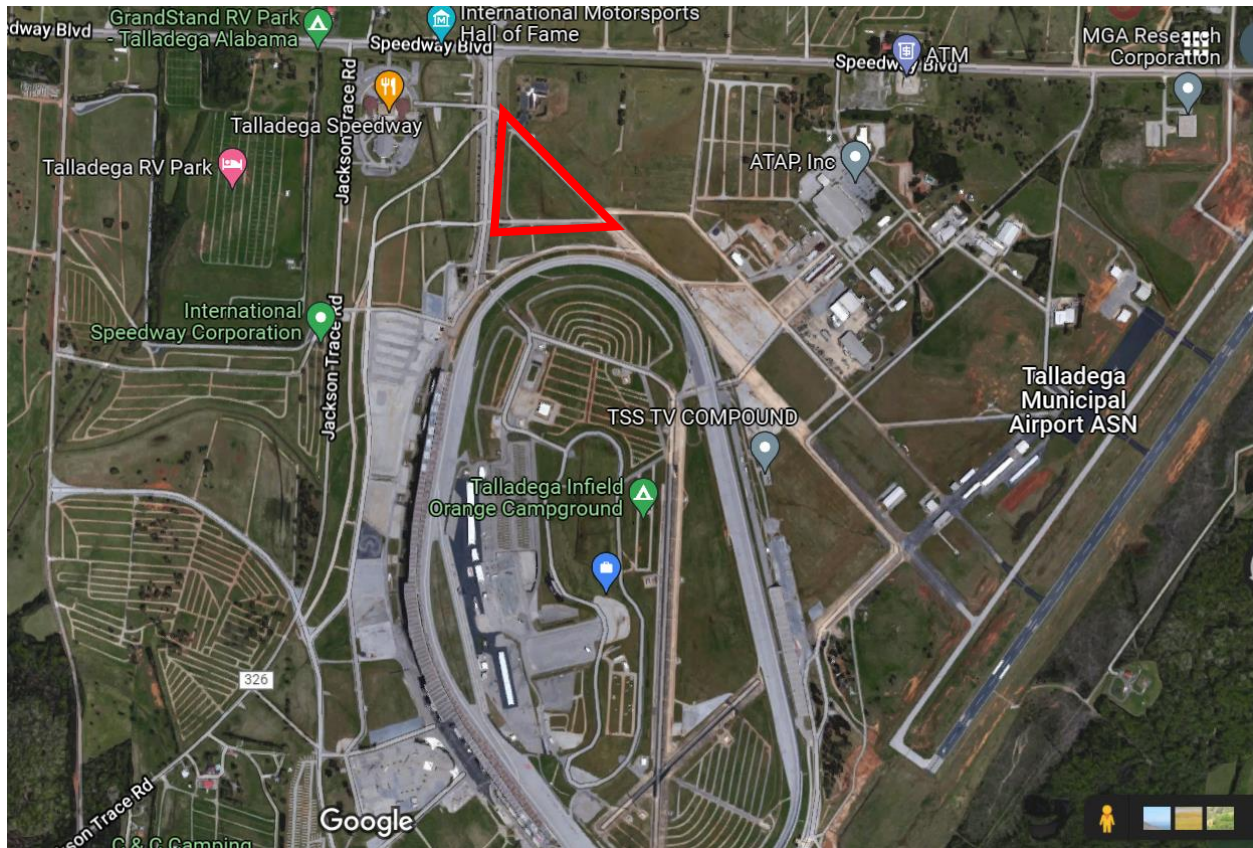
Note: Port-a-potty's will be available in the Scout campground as well

Note: DO NOT walk through the South tunnel, even if someone says you can. To get to the garage experience, you must take the yellow tram



Scout Campout at Talladega Superspeedway

If you are looking to leave during the race on Sunday or immediately after the race ends, I recommend packing up early and parking in our free lot, located in the right triangle below. If you want to stay in the campground, please expect it to take about two hours to leave the track.



FAQs:

- Please reference this fan guide: <https://www.talladegasuperspeedway.com/fan-guide/>
- Campfires are allowed, please bring your own fire pits and firewood
- Grilling out is allowed
- We are a cashless facility, please plan accordingly
- Small, soft-sided coolers (12 X 12 X 12) are allowed in the stands but NOT in the Talladega Garage Experience (drop-off area is available)
- Bags are allowed, please bring clear bags when possible
- Pocket knives are not allowed in the gates
- Earbuds are a must
- You will never have enough water, bring water, water, water!